



air heating type vaporizer

SR Super Rizer



SR Super Rizer

SR series vaporizer is air heating type vaporizer, and it utilizes **thermal energy**.

This type doesn't need special heat source.

The concept of this vaporizer is

safety, economic efficiency and saving energy.



SR-W

SR vaporizer can keep a stable supply of LPG continuously in using thermal energy.

This type vaporizer can save running cost greatly compared to conventional vaporizers; for example electricity heat type, steam type or hot water circulating type, because of using thermal energy. This vaporizer will greatly benefit you for large-scale residential use and industrial and commercial use.

SR-W Sires

- Outlet Pressure: 0.12 Mpa
- Design Temperature: More than 15°C
- Inlet pressure : 0.15 -1.56 Mpa

■ Specification (standard)

ตารางขนาดขนาด-น้ำหนักรถ Air Vaporizer (ชนิด โดสPSA)

รุ่น	จำนวนถังเก็บ	จำนวนล้อ	ขนาด-น้ำหนักรถ				Control Box
			กว้าง (mm)	ยาว (mm)	สูง (mm)	น้ำหนัก (Kg)	น้ำหนัก (Kg)
SR-T100S	24	1	1,410	1,210	4,880	650	40
SR-T200S	35	1	1,410	1,410	4,880	950	40
SR-T300SL	42	1	1,410	1,510	4,880	1,000	60
SR-T400WL	52	3	3,120	1,370	4,980	1,400	60
SR-T500WL	63	3	3,120	1,570	4,980	1,680	60
SR-T600WL	71	3	3,120	1,770	4,980	1,900	60
SR-T700WL	97	3	3,560	1,770	4,980	1,900	60
SR-T800WL	126	3	4,310	2,010	4,980	3,000	60
SR-T1000WL	158	3	5,110	2,010	4,980	4,000	150
ST-T1500WL	232	5	4,320	4,350	4,980	6,000	150

* ขนาด-น้ำหนักรถ คือขนาดที่ยังไม่ได้รวมขนาดของ Control Box (Control Box ขนาดที่ปรับ: 400 mm)

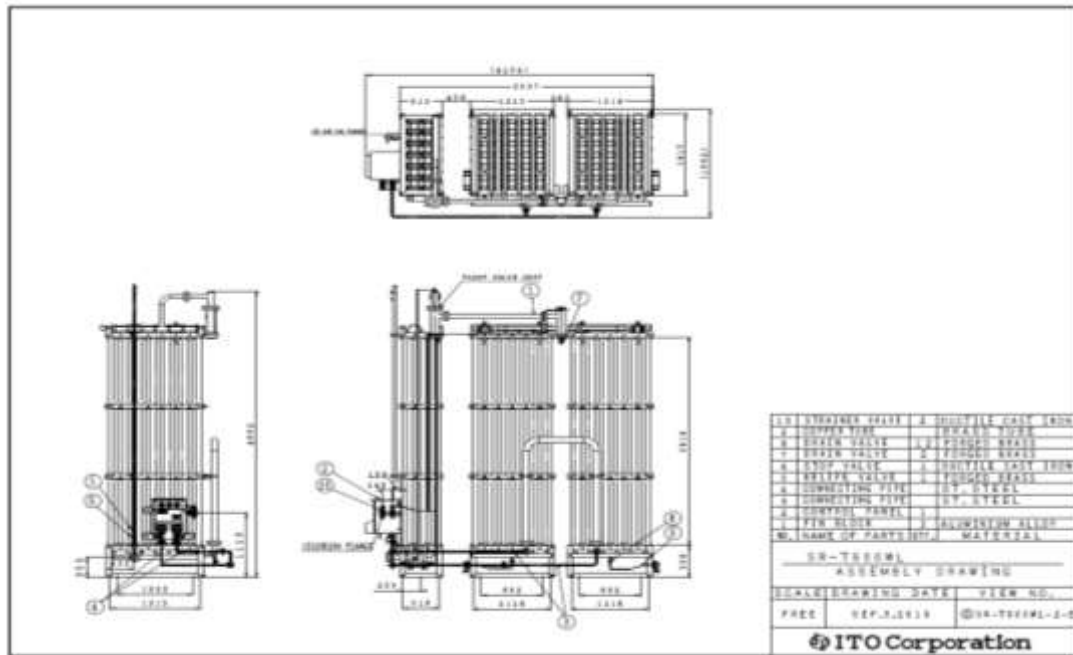
This vaporization condition is as follows:

LPG Composition: C3H8: 50%
,C4H10 : 50%

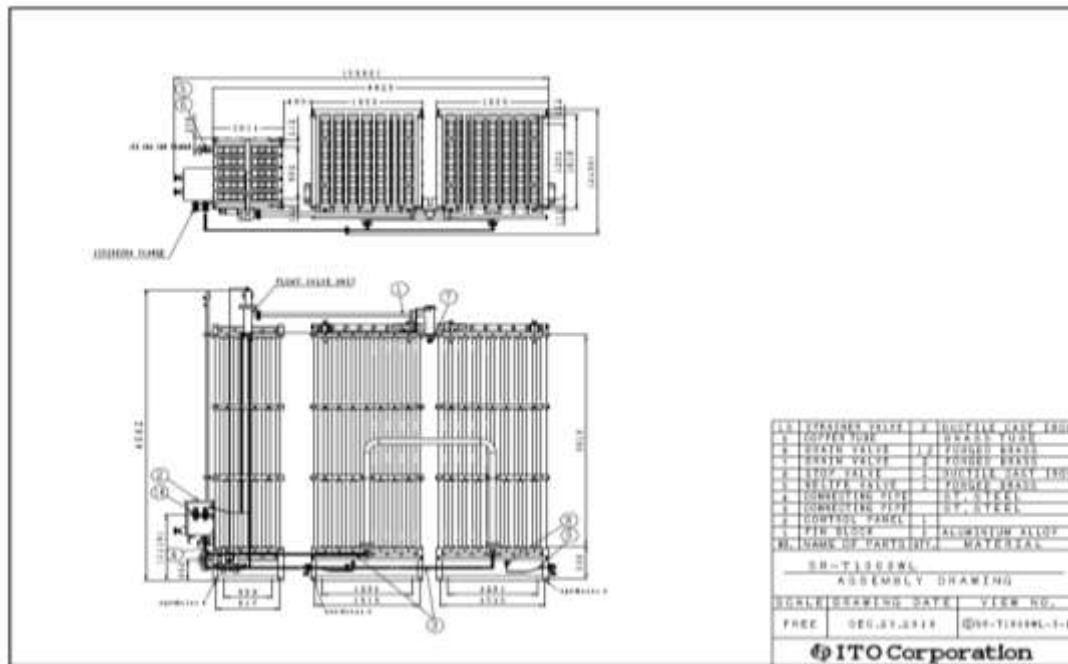
■ Control Box



■ The Drawing of SR-W



The Drawing of SR-T600WL Capacity : 600 kg/h



■ The Drawing of SR-T1000WL Capacity : 1,000 kg/h

The features of SR-W series

Outstanding economic efficiency

1 No-running cost!

These types vaporizers are very economical because they don't need initial cost for heat source and running cost for vaporizing LPG (These type utilize thermal energy to vaporize LPG)

2 Extremely long life!

The material of these vaporizers body is aluminum alloy. This material is good efficiency of heat transfer and durable. The lifetime is semi permanent.

3 No-rusting!

The material of these vaporizers control box is stainless steel. It doesn't corrode and keeps beautiful luster for a long time.

Safety and reliable design

1 Preventing liquid-spill

It prevents LPG from spilling out to gas supply system absolutely by the means of ITO KOKI original sensing temperature system.

2 Easy operation and maintenance

The control section is driven by own gas pressure, no electricity or air pressure is needed for its operation. You can easily operate and maintain it. Even if power failure happens, they can keep gas supply stably.

Relieve Double – Lines System

1. SR-W series has two-numbers of fin block which is composed of Liquid Control Section and Vaporization Section.
2. In a fin block, there are service side and reserved side. If the liquid level in the fin block of service side comes to the position of half the fin length, gas will flow into the another block via the connection pipe. Moreover, you can get more stable vaporization capability continuously by changing the service side block to another one manually and defrosting the ice deposited on the service side block bottom.
3. Our two fin blocks system also allows the user to use vaporizer without suspending gas supply during the maintenance.
4. In the case of supplying gas by cylinders, it is possible to supply gas in automatic change-over system.

System Outline

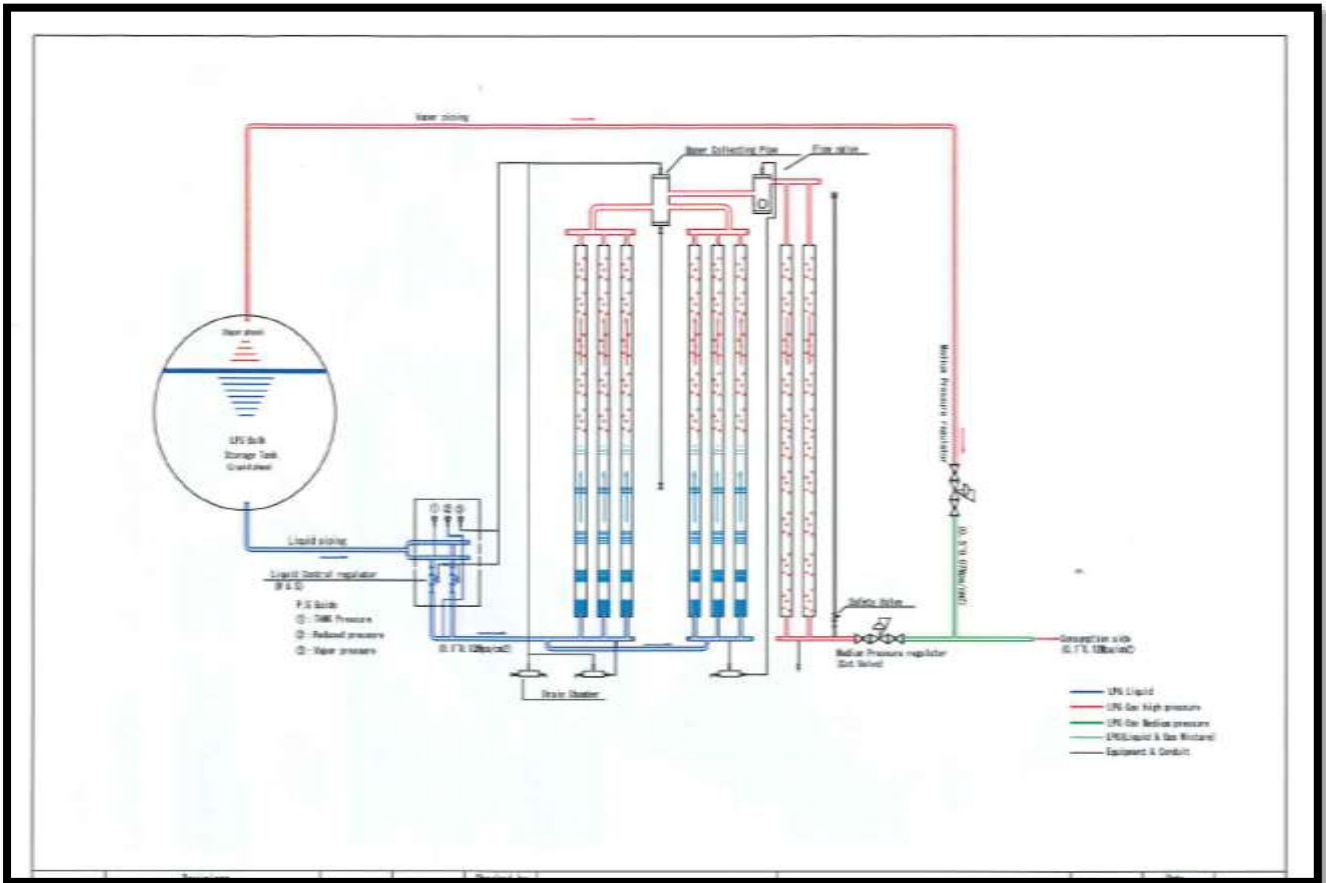
- 1 At first, Liquid Control Pressure Regulator reduces the pressure of liquid LPG from the container(s), and partial vaporization change the fluid to gas & liquid mixture. This low-temperature mixture flow into the fin block (Liquid vaporization section), and it change to low-temperature gas LPG absorbing the heat of atmospheric air in the section. This low-temperature gas LPG flow into the gas temperature rising section via top manifold and temperature sensing cylinder, and it is heated up to the level of atmospheric air temperature or so, then supplied to the gas consumers.
- 2 If a bypass line (gas phase) is constructed, gas supply will not be stopped even if Liquid-spill prevention mechanism is activated in the case of too much gas consumption. After the action, LPG (liquid phase) in liquid vaporization section continue to vaporize, and if it fails to maintain the proper supply pressure, the middle pressure regulator on the bypass line opens their own valves and start the gas supply also from the gas LPG from containers directly. You don't need worry about the sudden gas stop any more.
- 3 After it shut off the gas, the gas consumption lead to a vaporization of liquid LPG in the sensing temperature section, and the temperature recovers. Then the control unit is driven and release the liquid control pressure regulator automatic shut-off system to resume the gas supply.
- 4 SR has liquid-spill prevention system. The Spilling liquid LPG is shut off Float Valve.

The Vaporizing Capacity of SR-W series depends on the gas composition.

We will choose appropriate model for you, please put following blanks and send us it.

1 Gas Composition	C3H8 ()%	C4H10 ()%
2 Lowest Temperature in a Year	()	degrees C
3 Continuous Operating Time	()	hours
4 Delivery Pressure	()	MPa
5 Flow Rate	()	kg/h

Operation Flow Chart



For more information please contact :